

About INDUCOAT®

Made in Holland.
Experts in Windmills, Wooden Clogs, Bicycles and anti-mould Coatings

The Dutch anti-mould coating specialist

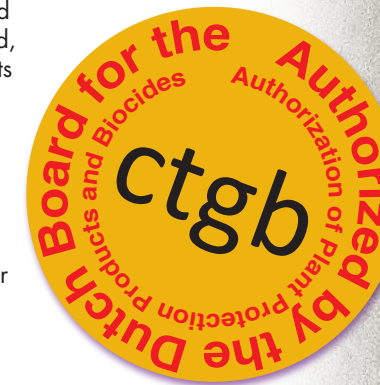
The primary focus of Inducoat is manufacturing and supplying proven and cost effective anti-mould coating systems. Inducoat has been delivering this promise for over a decade – winning the recognition of being the preferred supplier of anti-mould coatings to leading Dutch housing estates, maintenance engineers and coating professionals. Inducoat is also the ONLY anti-mould coatings manufacturer to receive a CTGB number accreditation by the Dutch Board for the Authorisation of Plant Protection Products and Biocides. The numbers recognise and unequivocally prove that Inducoat anti-mould products are safe and fully effective and that Inducoat manufacturing fully complies to the strictest international regulations, ranging from REACH to ISO9001.

References

The Inducoat FUNGI anti-mould coating has been tested under the severest conditions and against the toughest competitors, worldwide. Building structure/ engineering often is the cause of the growth of the mould – Issues such as lack of ventilation, damp moist environments or having a cold bridge for example can benefit from a simple and effective anti-mould coating. It's just not always possible (technical, financial) to amend the building structure. A solid anti-mould coating can help prevent the growth of mould, often for many years. Hence, the reference base of Inducoat consists typically of clients which are responsible for housing estates, hospitals, care homes. In the food industry and clients with BRC-7 standards choose Inducoat FUNGI as their preferred anti mould coating.

Get in touch with the Dutch

Global Hygiene Services Ltd, based in Evesham, United Kingdom, is the international representative for Inducoat B.V. Please do not hesitate to contact their team to see your operation can benefit from the worlds highest level, the Dutch anti-mould standard*



INDUCOAT®

Leader in surface hygiene

Postbus 2776 - 3800 GJ AMERSFOORT
The Netherlands
T. (033) 456 23 94 - F. (033) 456 25 94
E. info@inducoat.com - I. www.inducoat.com

Disclaimer

*Please note that this brochure is for promotional purposes only. Legal claims are indicative for the Dutch standard and use Dutch legal language. Please ask your local representative for the advice on your local situation. All rights reserved, Inducoat B.V. ©

Versie: ENG.08.2017

INDUCOAT®

Leader in surface hygiene

Professional anti-mould coating system

The Dutch authorized anti-mould approach



The first and only system authorized by the Dutch Board for the Authorization of Plant Protection Products and Biocides

Part 1 Anti-mould system
Part 2 Anti-bacterial system
Part 3 Anti-Algae system

Mould

What is Mould?

Mould is a natural part of the environment and can be found almost anywhere. They belong to the kingdom Fungi and live in moist places. Indoors mould growth should be avoided. There are many types of mould – all of them need water or moisture to grow. There are proven health risks associated with indoor mould growth. These risks are especially harmful for children, elderly people and those with pre-existing respiratory illnesses. When mould spores land on damp spots or surfaces, they may begin growing indoors and digesting whatever they are growing on in order to survive. Eventually moulds will destroy the things on which they grow.

By controlling moisture and reducing mould growth, you can: prevent damage to building materials and furnishings, save money, and avoid potential health risks.

How does mould spread?

Mould spread by producing tiny reproductive cells called spores that waft through the air. Mould spores usually cannot be seen without magnification (ranging in size from 2-10 um) and are naturally present in indoor air. Spores may remain able to grow for years after they are produced. In addition, whether or not the spores are alive, the allergens in and on them may remain allergenic for years.

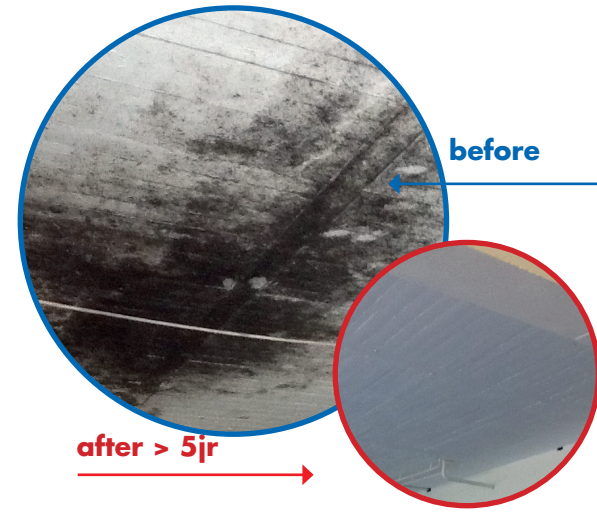
Black mould

We often hear people refer to mould as “Black Mould”. Just because mould may be black in colour, does not mean that it is the “toxic black mould”. The majority of the mould we see around the house are black in appearance, but mould can come in many different colours.

There are many different types of mould in the fungi family, the most common types are; penicillium/aspergillus, cladosporium, ascospores and basidiospores. The toxic black mould is known as Stachybotrys.

Proper Black Mould Protection

In the Netherlands, building owners accept that either the conditions of the building (cold bridge, ventilation) or the behavior of the resident are causes of the growth of mould which are not easy to amend. Often, it is more realistic to choose an high performance anti-mould coating system to eliminate the growth problem. Practical, realistic and proven. And, cost effective.



To ensure this high performance, Dutch anti-mould coating is subjected to the strictest standards. Both in evidence, durability and safety. There is a specific, independent, governmental body which authorizes anti-mould coating. Only anti-mould coatings with an authorization number can be sold and used in Holland. In the Netherlands, Inducoat FUNGI is the market leader as the first authorized anti-mould coating and the one with the highest performance. The end result is impressive: even in the worst conditions, the Inducoat FUNGI is able eliminate mould long term. Leading housing estates, often responsible for thousands of homes, specify Inducoat FUNGI and form an long term reference base.

The Inducoat System

The Inducoat system is safe, simple and ecologic. The first step is to spray the mould infected surface and its surroundings with the biological degradable Inducoat CLEANER. After 24 hrs, the Inducoat FUNGI anti-mould emulsion can be applied – simply using a roller, brush or spray. Done.



INDUCOAT® FUNGI

Description

Inducoat FUNGI is a water dilutable product based on a styrene acrylic copolymer. This product has been formulated with specific biocides assuring a long term mould resistance, for application on walls and ceilings. It has an unique authorization number 13620 N provided by the Board for the Authorisation of Plant Protection Products and Biocides. Recommended uses



Inducoat FUNGI should be used for interior applications on mineral substrates like new and old masonry, plaster, concrete and brickwork, that are exposed to conditions which favor the development and growth of mould. Inducoat FUNGI can be applied with brush, roller or by airless spray.

Technical data

Appearance	Flat
Colour	White
Spec. mass	1.45 kg/L
Solids contents	60 % by weight 44 % by volume
Viscosity	100-150 P (Brookfield 20 Rpm)
Recommended wet film thickness	90 microns
corresponds with Theoretical coverage	40 microns dry 11 m ² /L at 40 microns dry.
Practical coverage approx.	10 m ² /L depending on application method as well as roughness and porosity of the substrate.
Drying times at Tack free	20C and 50 % relativehumidity 1 hour
Recoatable	4 hours
Full hardness	3 days
Heat resistance	90C (dry heat)
VOC contents	max. 30 g/L

Surface preparation

New concrete, plaster or brick surfaces should cure and dry for at least 30 days prior to application of the coating. When applying to new brickwork remove any cement rests or residues using a wire brush. Surface defects should be repaired. Remove oil, grease and other surface contaminants by high pressure- (steam) cleaning, combined with appropriate detergents. Remove old, deteriorated coatings by scraping, wire brushing or using high pressure (steam) cleaning. Remove mould or mildew by additional cleaning with Inducoat Cleaner.

Safety

Consult the Label text and the Material Safety Data Sheet. The data herein are given in good faith and based on practical experience and testing. Upon appearance of a new sheet, this version becomes obsolete. No responsibility based on the data given can be assumed, because application and conditions are beyond our control.

On porous or chalking substrates a coat of InduFIX Impregnating primer should be applied before application of the Inducoat FUNGI. Before the application of the coating the surface has to be clean. A slight dampness of the substrate is acceptable.

Directions for use

Mix the coating before use till fully homogeneous. Thinning and application Brush: Up to 5 % vol. water. Use brushes suited for water dilutable products (blend of synthetic and natural bristles). Roller: Up to 5 % vol.water. Acrylic or polyester (8-12 mm) rollers. For textured surfaces long nap (14-16 mm) rollers. Airless Nozzle 013-018, avoid thinning with water. Cleaning of the equipment. Soap and (warm) water. Clean immediately.

Conditions

Temperature of coating, substrate and air between 5 en 35C, relative humidity < 80%. Temperature of substrate at least 5C above the dew point.

Remarks

Dry film thickness not over 90 microns. (190 microns wet)

Storage stability

At least 3 years from manufacturing date in unopened, original cans. Keep from freezing, and direct sunlight at temperatures between 5 and 35 C.

INDUCOAT® CLEANER

Description

Inducoat Cleaner is a clear water dilutable cleaner based on a quarternary ammonium compound, free of metal compounds and biological degradable. It has an authorization number 12981N provided by the Board for the Authorisation of Plant Protection Products and Biocides.

Recommended uses

Inducoat Cleaner is used for application on mineral substrates like new and old masonry, plaster and concrete, in order to fight and remove mould contamination, before finishing these surfaces with INDUCOAT FUNGI.



12981N

Technical data

Appearance	colorless liquid
Spec.gravity	1.0 kg/L
Viscosity	Thin liquid
pH approx.	7
Odor	slight characteristic odor
Flashpoint	non flammable
Practical consumption	approx. 4-8 m/L, depending on roughness and porosity of the substrate and the application method

Directions for use

To fight and remove mould dilute the Inducoat Cleaner as follows:

Cleaner 1 part, water 20 parts (50 ml per liter water)
Add the Cleaner to the water

In case of very severe mould contamination dilute the Inducoat Cleaner as follows:

Cleaner 1 part, water 9 parts (100 ml per liter water)
Add the Cleaner to the water.

Apply the diluted Cleaner by roller, brush, spraying at low pressure or sprinkling. Wet the surface sufficiently; the surface should remain wet for at least 5 minutes. After 24 hours the remains mould should be removed by low pressure water or wet brushing. After drying the surface can be finished with INDUCOAT FUNGI.

Upon using the Inducoat Cleaner no soap or other synthetic cleaners should be used since otherwise the Inducoat Cleaner becomes ineffective.

Do not use Inducoat Cleaner at temperatures below 5°.

Application: Low pressure spray

Cleaning of the equipment water

Storage stability

At least 1 years from manufacturing date in unopened, original cans. Keep from freezing

Safety

Consult the Label text and the Material Safety Data Sheet. The data herein are given in good faith and based on practical experience and testing. Upon appearance of a new sheet, this version becomes obsolete. No responsibility based on the data given can be assumed, because application and conditions are beyond our control.